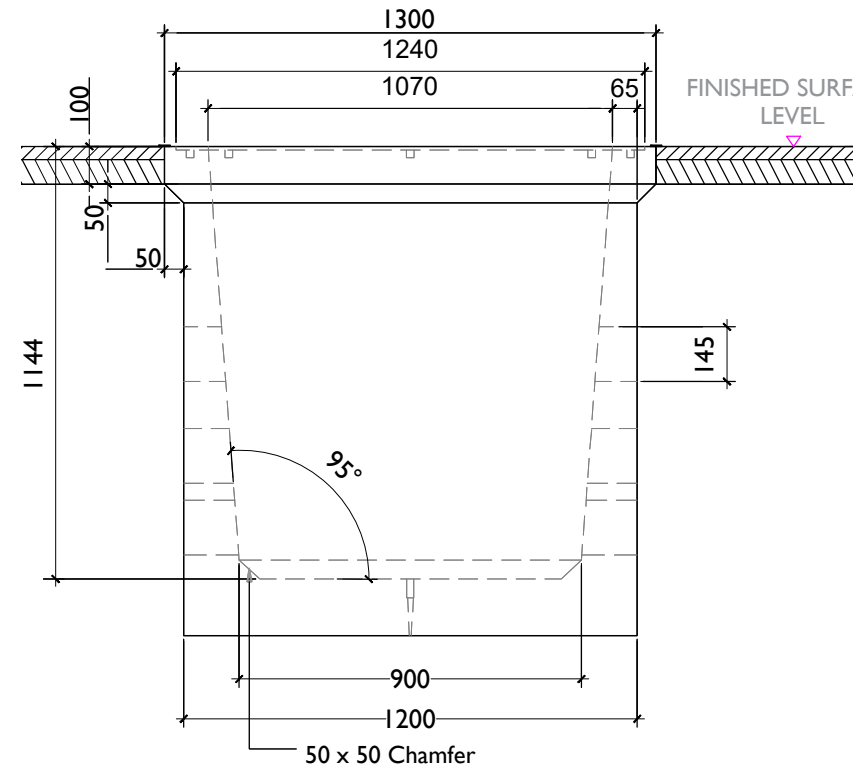
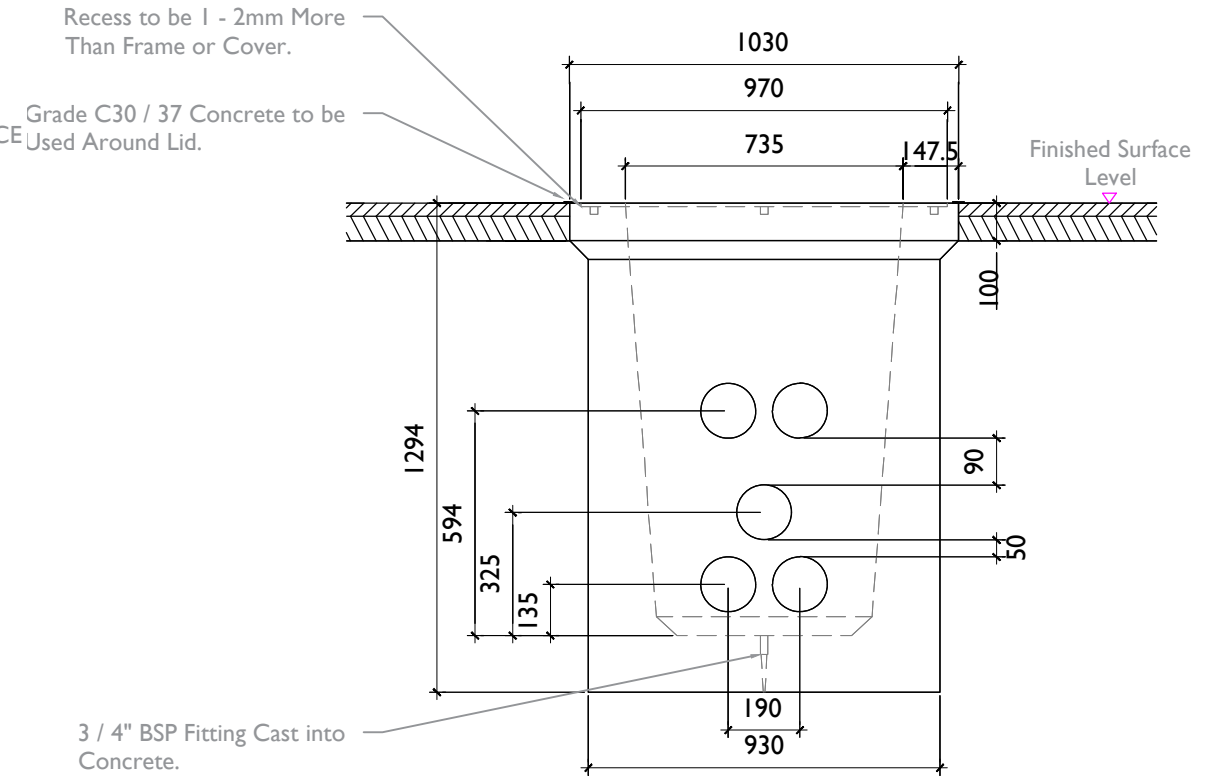


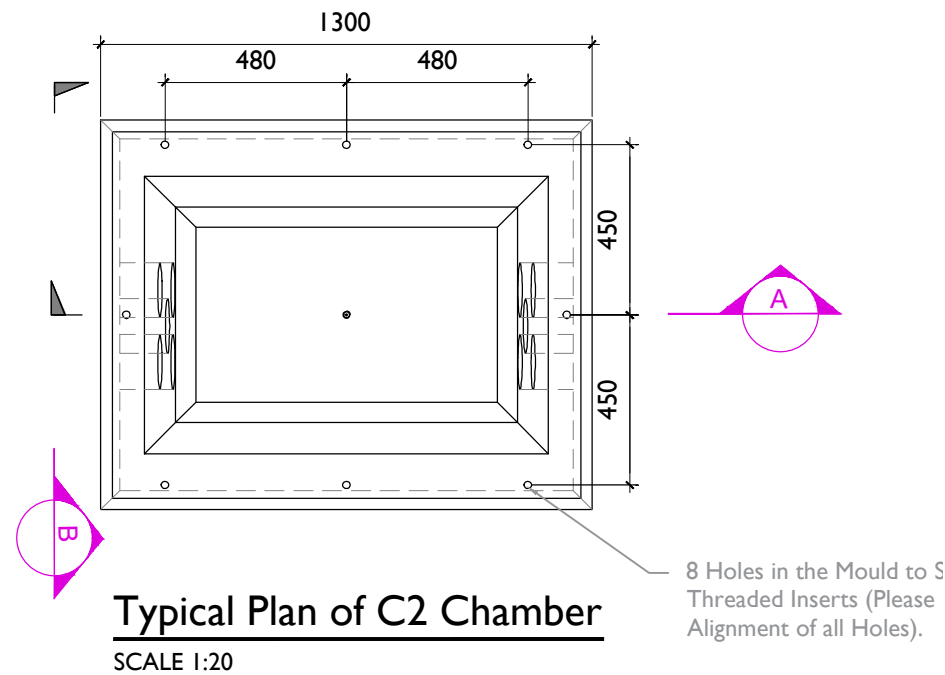
- GENERAL NOTES:**
1. Please note that this is drawing for planning and is not to be used for construction.
 2. This drawing is to be read in conjunction with relevant drawings, specifications and reports.
 3. All Dimension in Millimeters Unless Otherwise Stated.
 4. Reinstatement to Comply with Requirements of The Relevant Local Authority / Asset Owner.
 5. Entrance and Exit Ducts to be in line.
 6. All Material and Workmanship to be in Accordance with NRA / T.I.I. Specification for Roadworks, May 2005 & Subsequent Revisions
 7. Reinforced Concrete to be Minimum Grade C32 / 40, Sulphate Resisting Cement to be Used Where Aggressive Soil Conditions Apply, Refer to Table 6.1 of The British Standard 8110.
 8. Carriageway Covers and Frames to be to B.S EN 124.
 9. All Covers Shall Have "ESB" Logo Incorporated in Them to the Approval of Eirgrid.
 10. Step Irons to be Got Dipped Galvanized to B.S 729 and Positioned as Shown on any Chamber Deeper Than 700mm on the end Remote From any Side Entry Duct.
 11. Concrete Precast Chamber and Cover to be tested Through 5 Points, 40 Tonnes Vertical Static Loading Test by an Independent Test Company. If Required, Further Details Will be Provided by ESB/Eirgrid.
 12. Final Position of C2 Chambers Shall be Agreed with ESB/Eirgrid.
 13. In a Forest Environment, Backfill with Lean Mix Outside The Cover Frame Where The Asphalt is shown.



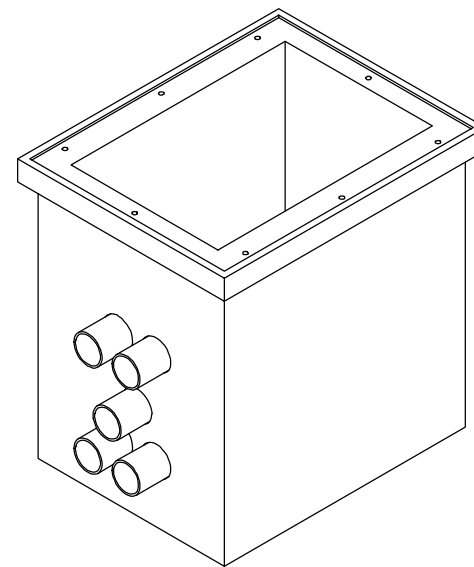
C2 Chamber Detail - Section A
SCALE 1:20



C2 Chamber Detail - Section B
SCALE 1:20



Typical Plan of C2 Chamber
SCALE 1:20



Isometric : C2 Chamber Arrangement
SCALE 1:20



Head Office
Beenreigh,
Abbeydorney,
Tralee, Co. Kerry
Ireland
Tel: 00353 66 7135710

CLIENT



PROJECT

Ballincor Wind Farm
110 kV Grid Connection

PROJECT NUMBER
05-867

SHEET NUMBER
05867-DR-213

SHEET TITLE

Typical Communications
Chamber Details

DRAWING STATUS
For Planning

ISSUE/REVISION

I/R	DATE	DESCRIPTION
P2	07.07.2025	Issued for Planning
P1	16.08.2024	Issued for Planning